

MID ATLANTIC REAL ESTATE JOURNAL'S *Executive Women in Business*

October 26 - November 8, 2012

Section D



Kathy Anderson
Progress Realty
Advisors, LLC



Catherine (Kate) Durso
Fitzpatrick Lentz &
Bubba, P.C.



Heather Lynne
The James Balliet Comm'l.
Group- KW Commercial



Ida McMurray,
CCIM, SIOR,
NAI CIR



Joni Sweetwood
The Kislak Company



Janet Bortz
The Kislak Company



Trish Faidiga
Advantage Building &
Facility Services, LLC



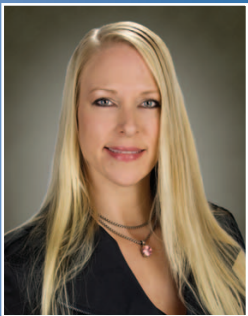
Debbie Pomerantz
Gebroe-Hammer
Associates



Rebecca Machinga, CPA
WithumSmith+Brown, PC



Kelly L. Berfield, Esq.
The Dietrick Grp.,
LLC



**Jennifer R. Thesing-
Sauder, CPA, The**
Thesing Companies



Carol Shelby
Meridian Capital
Group, LLC



Nicoletta M. Pagnotta
Meridian Capital Group,
LLC



Debra Tantleff
Roseland Property



Amy L. Hawley,
Hawley Realty, Inc.



Sharon N. Humble
Linebarger Goggan
Blair & Sampson, LLP



Lisa Keane, CPA
EisnerAmper LLP



Jacqueline Buhn
AthenianRazak LLC



Janet Kimbleton Grace
AthenianRazak LLC



**Rachel Yoka, LEED
AP, BD+C, CPSM**
Timothy Haahs & Assoc., Inc.



Karen Zinn, CRE
KBZ Advisors



Bernadette M. Daniel,
CPA, MT
Asher & Company, Ltd.



Kristina Harshany, CES
SEI Private Wealth
Management



Pamela J. Shupp, AICP, CEcD
Greater Reading Economic
Partnership



Deb Heffner, EDP
Greater Reading Economic
Partnership